



GRATING PACIFIC

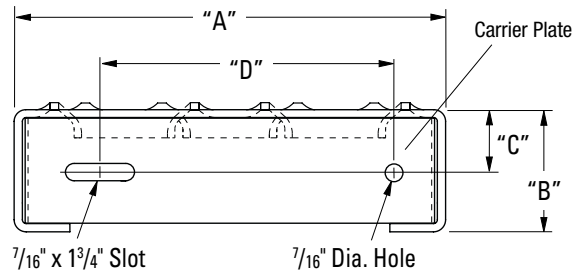
TRACTION TREAD™ SAFETY GRATING STAIR TRENDS

Traction Tread Stair Trends



Widths	Depths	Material
7", 10" & 12"	1-1/2" or 2" Channel Heights	Pre-galvanized Carbon Steel, 13 ga. or 11 ga. 5052 Aluminum

Traction Tread Stair Trend Widths				
Product Width	A	B	C	D
7"	6-15/16"	1-1/2"	3/4"	4"
	6-15/16"	2"	1"	4"
10"	9-15/16"	1-1/2"	3/4"	7"
	9-15/16"	2"	1"	7"
12"	11-15/16"	1-1/2"	3/4"	9"
	11-15/16"	2"	1"	9"



Traction Tread Safety Grating Stair Trends

C = Safe allowable concentrated load of center span on simple beam (lbs.) D=Deflection (in.)

Material Gauge	Channel Depth in.	Weight lb./lin. ft.	Catalog Number	Load/Defl. Code	Span					
					2'-0"	2'-6"	3'-0"	3'-6"	4'-0"	
7" Width										
Steel 13 ga.	1-1/2"	3.73	T-TT71513 GL	C	555	483	420	352	295	
Steel 13 ga.	2"	4.06	T-TT72013 GL	C	1107	963	836	702	588	
Steel 11 ga.	1-1/2"	4.87	T-TT71511 GL	C	696	605	526	441	370	
Steel 11 ga.	2"	5.43	T-TT72011 GL	C	1405	1222	1061	891	746	
Aluminum .125	1-1/2"	1.70	T-TT715125 AL	C	242	211	183	154	129	
Aluminum .125	2"	1.87	T-TT720125 AL	C	490	426	370	311	260	
10" Width										
Steel 13 ga.	1-1/2"	4.61	T-TT101513 GL	C	608	530	460	386	323	
Steel 13 ga.	2"	4.89	T-TT102013 GL	C	1226	1067	927	778	651	
Steel 11 ga.	1-1/2"	6.24	T-TT101511 GL	C	762	663	576	483	405	
Steel 11 ga.	2"	6.70	T-TT102011 GL	C	1554	1353	1174	986	826	
Aluminum .125	1-1/2"	2.11	T-TT1015125 AL	C	266	232	201	169	141	
Aluminum .125	2"	2.35	T-TT1020125 AL	C	542	472	409	344	288	
12" Width										
Steel 13 ga.	1-1/2"	5.00	T-TT121513 GL	C	633	551	478	402	336	
Steel 13 ga.	2"	5.70	T-TT122013 GL	C	1281	1115	968	813	681	
Steel 11 ga.	1-1/2"	7.16	T-TT121511 GL	C	794	691	600	504	422	
Steel 11 ga.	2"	7.58	T-TT122011 GL	C	1624	1414	1227	1031	863	
Aluminum .125	1-1/2"	2.45	T-TT1215125 AL	C	277	241	209	176	147	
Aluminum .125	2"	2.60	T-TT1220125 AL	C	566	493	428	359	301	
Deflection (same for all widths and depths)					D	0.02	0.04	0.06	0.08	0.10

Safe allowable design loads shown are concentrated at center of span on simple beam.

⁽¹⁾ For stair treads, intermediate stringer is recommended for spans over 4 feet.