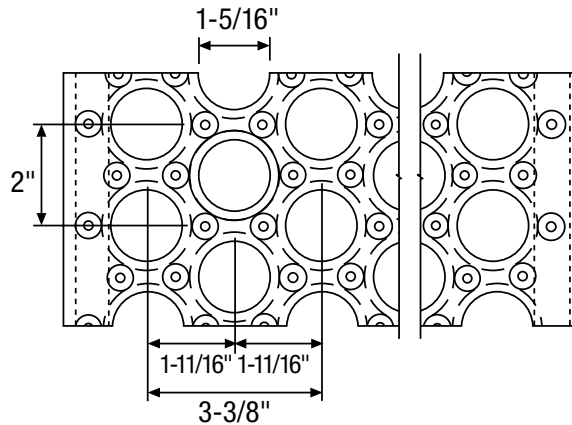




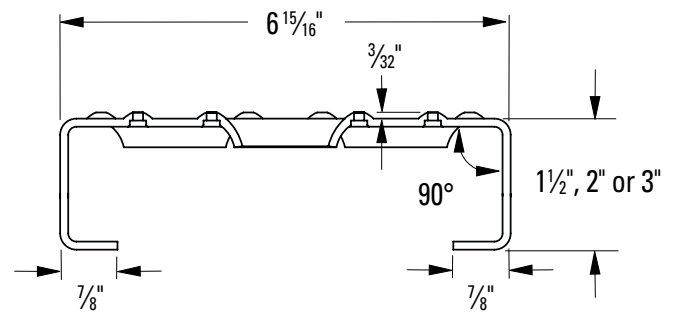
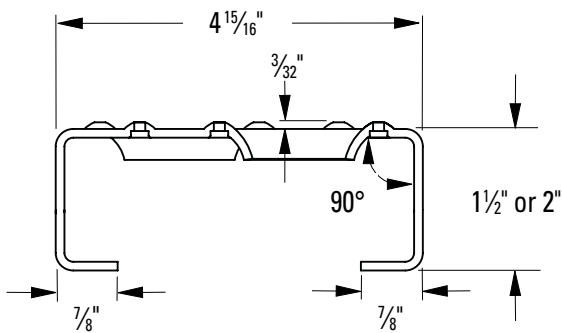
GRATING PACIFIC

PERF-O GRIP® SAFETY GRATING SIZES & OPTIONS



2-Hole Plank — 5" Nominal Width

3-Hole Plank — 7" Nominal Width



Part No.	Width	Channel Depth	Gauge	Weight per LF
13 Ga. Pre-Galvanized Steel*				
P-21513	5"	1-1/2"	13	2.6
P-22013	5"	2"	13	2.8
11 Ga. Pre-Galvanized Steel*				
P-21511	5"	1-1/2"	11	3.6
P-22011	5"	2"	11	3.9
.125" 5052 Aluminum				
P-220125-A	5"	2"	.125"	1.3
16 Ga. 304 Stainless Steel				
P-22016-S	5"	2"	16	2.1

Part No.	Width	Channel Depth	Gauge	Weight per LF
13 Ga. Pre-Galvanized Steel*				
P-31513	7"	1-1/2"	13	3.0
P-32013	7"	2"	13	3.3
11 Ga. Pre-Galvanized Steel*				
P-31511	7"	1-1/2"	11	4.2
P-32011	7"	2"	11	4.5
P-33011	7"	3"	11	4.8
.125" 5052 Aluminum				
P-320125-A	7"	2"	.125"	1.5
16 Ga. 304 Stainless Steel				
P-32016-S	7"	2"	16	2.4

* To indicate HRPO carbon steel, add the suffix "-B" to the above stated part numbers.

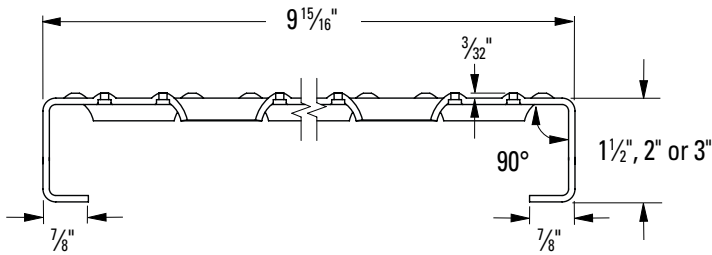
* To indicate HRPO carbon steel, add the suffix "-B" to the above stated part numbers.



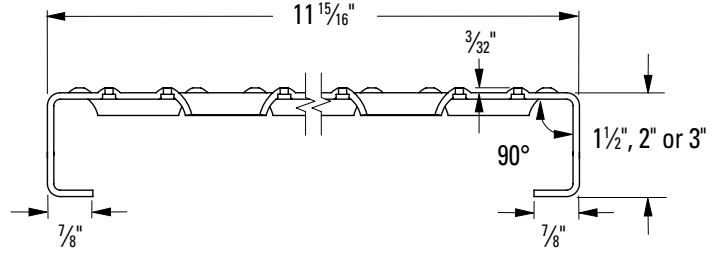
GRATING PACIFIC

PERF-O GRIP® SAFETY GRATING SIZES & OPTIONS

5-Hole Plank — 10" Nominal Width



6-Hole Plank — 12" Nominal Width



Part No.	Width	Channel Depth	Gauge	Weight per LF
13 Ga. Pre-Galvanized Steel*				
P-51513	10"	1-1/2"	13	3.5
P-52013	10"	2"	13	3.9
11 Ga. Pre-Galvanized Steel*				
P-51511	10"	1-1/2"	11	4.5
P-52011	10"	2"	11	5.1
P-53011	10"	3"	11	5.4
.125" 5052 Aluminum				
P-520125-A	10"	2"	.125"	1.8
16 Ga. 304 Stainless Steel				
P-52016-S	10"	2"	16	3.2

* To indicate HRPO carbon steel, add the suffix "-B" to the above stated part numbers.

Part No.	Width	Channel Depth	Gauge	Weight per LF
13 Ga. Pre-Galvanized Steel*				
P-61513	12"	1-1/2"	13	4.3
P-62013	12"	2"	13	4.6
11 Ga. Pre-Galvanized Steel*				
P-61511	12"	1-1/2"	11	5.3
P-62011	12"	2"	11	5.5
P-63011	12"	3"	11	6.2
.125" 5052 Aluminum				
P-620125-A	12"	2"	.125"	2.1
16 Ga. 304 Stainless Steel				
P-62016-S	12"	2"	16	3.2

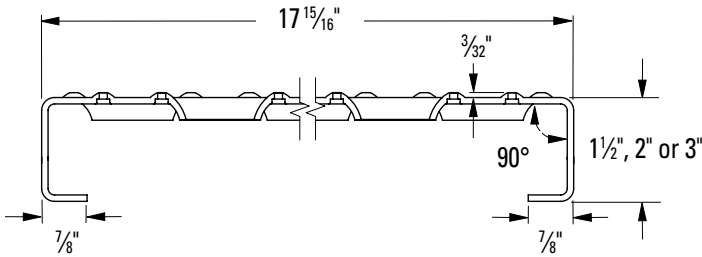
* To indicate HRPO carbon steel, add the suffix "-B" to the above stated part numbers.



GRATING PACIFIC

PERF-O GRIP® SAFETY GRATING SIZES & OPTIONS

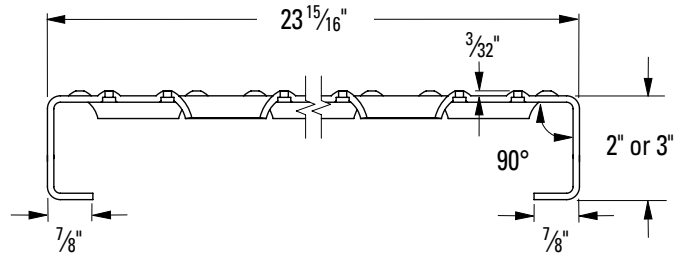
10-Hole Plank — 18" Nominal Width



Part No.	Width	Channel Depth	Gauge	Weight per LF
13 Ga. Pre-Galvanized Steel*				
P-101513	18"	1-1/2"	13	5.7
P-102013	18"	2"	13	6.0
11 Ga. Pre-Galvanized Steel*				
P-101511	18"	1-1/2"	11	6.8
P-102011	18"	2"	11	7.1
P-103011	18"	3"	11	7.9
.125" 5052 Aluminum				
P-1020125-A	18"	2"	0.125	2.79

* To indicate HRPO carbon steel, add the suffix "-B" to the above stated part numbers.

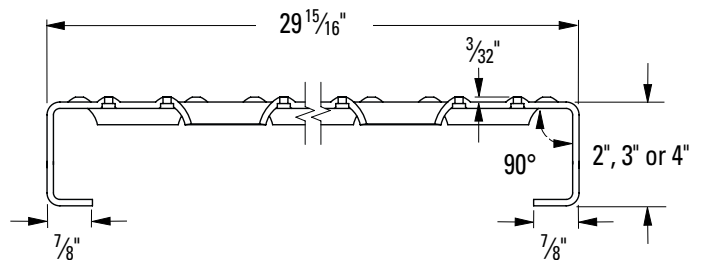
13-Hole Plank — 24" Nominal Width



Part No.	Width	Channel Depth	Gauge	Weight per LF
11 Ga. Pre-Galvanized Steel*				
P-132011	24"	2"	11	8.9
P-133011	24"	3"	11	9.8

* To indicate HRPO carbon steel, add the suffix "-B" to the above stated part numbers.

16-Hole Plank — 30" Nominal Width



Part No.	Width	Channel Depth	Gauge	Weight per LF
11 Ga. Pre-Galvanized Steel*				
P-162011	30"	2"	11	11.8
P-163011	30"	3"	11	12.7
P-164011	30"	4"	11	13.5

* To indicate HRPO carbon steel, add the suffix "-B" to the above stated part numbers.

Stock plank lengths available in 10' and 12'
Custom lengths available upon special order.