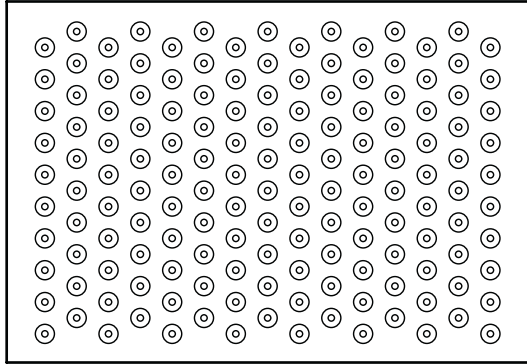


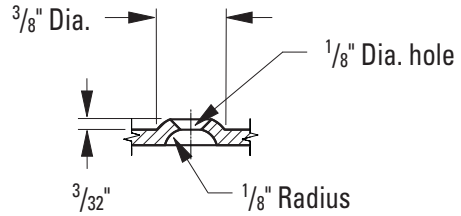


# GRATING PACIFIC

## TRACTION TREAD™ PLANK GRATING SIZES & OPTIONS

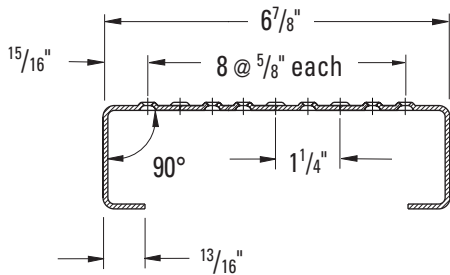


Standard Pattern



Button Detail

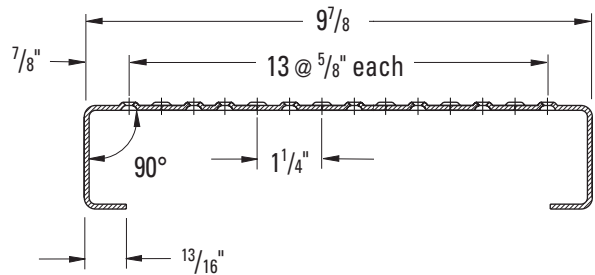
### 7" Nominal Width



Part No.	Width	Channel Depth	Gauge	Weight per LF
<b>13 Ga. Pre-Galvanized Steel*</b>				
TT-71513 GL	7"	1-1/2"	13	3.4
TT-72013 GL	7"	2"	13	3.7
TT-73013 GL	7"	3"	13	4.1
<b>11 Ga. Pre-Galvanized Steel*</b>				
TT-71511 GL	7"	1-1/2"	11	4.7
TT-72011 GL	7"	2"	11	5.2
TT-73011 GL	7"	3"	11	6.1
<b>.125" 5052 Aluminum</b>				
TT-715125 AL	7"	1-1/2"	.125"	1.6
TT-720125 AL	7"	2"	.125"	1.8

\* To indicate HRPO carbon steel, add the suffix "-B" to the above stated part numbers.

### 10" Nominal Width



Part No.	Width	Channel Depth	Gauge	Weight per LF
<b>13 Ga. Pre-Galvanized Steel*</b>				
TT-101513 GL	10"	1-1/2"	13	4.3
TT-102013 GL	10"	2"	13	4.6
TT-103013 GL	10"	3"	13	5.3
<b>11 Ga. Pre-Galvanized Steel*</b>				
TT-101511 GL	10"	1-1/2"	11	6.0
TT-102011 GL	10"	2"	11	6.4
TT-103011 GL	10"	3"	11	7.5
<b>.125" 5052 Aluminum</b>				
TT-1015125 AL	10"	1-1/2"	.125"	2.1
TT-1020125 AL	10"	2"	.125"	2.2

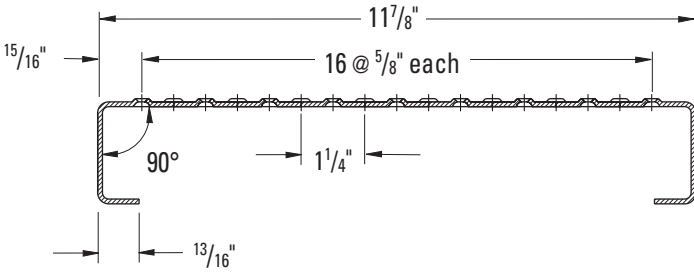
\* To indicate HRPO carbon steel, add the suffix "-B" to the above stated part numbers.



# GRATING PACIFIC

## TRACTION TREAD™ PLANK GRATING SIZES & OPTIONS

### 12" Nominal Width



Part No.	Width	Channel Depth	Gauge	Weight per LF
<b>13 Ga. Pre-Galvanized Steel*</b>				
TT-121513 GL	12"	1-1/2"	13	5
TT-122013 GL	12"	2"	13	5.3
TT-123013 GL	12"	3"	13	5.9
<b>11 Ga. Pre-Galvanized Steel*</b>				
TT-121511 GL	12"	1-1/2"	11	6.9
TT-122011 GL	12"	2"	11	7.3
TT-123011 GL	12"	3"	11	8.2
<b>.125" 5052 Aluminum</b>				
TT-1215125 AL	12"	1-1/2"	.125"	2.4
TT-1220125 AL	12"	2"	.125"	2.5

\* To indicate HRPO carbon steel, add the suffix "-B" to the above stated part numbers.

Stock plank lengths available in 10' and 12'  
 Custom lengths available upon special order.