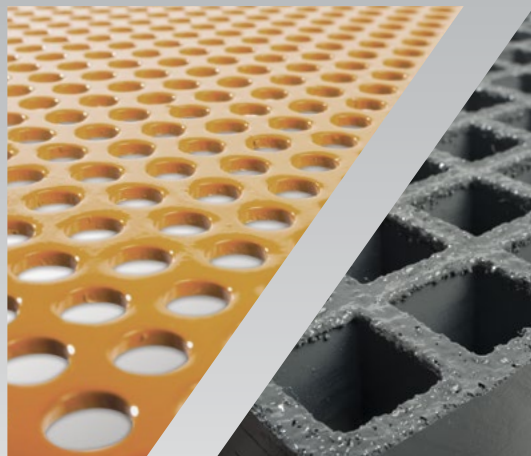
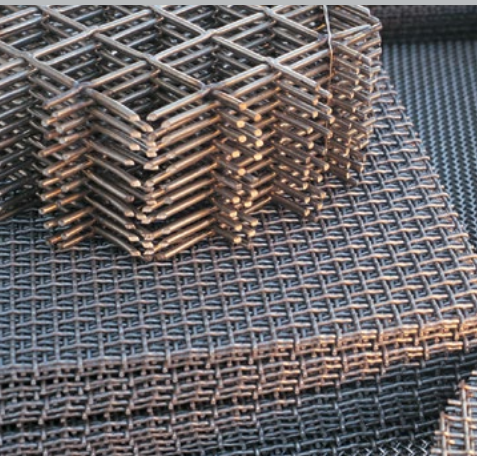


Service.
Quality.
Reliability.



GRATING PACIFIC

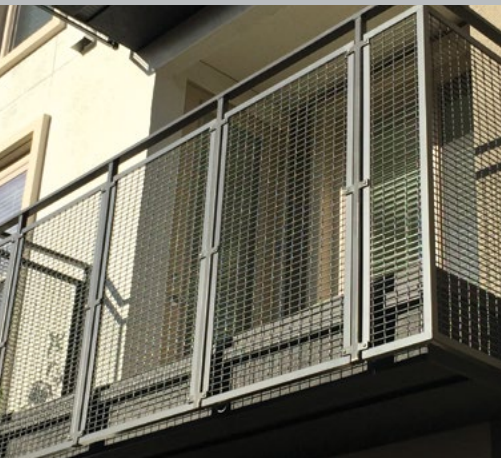
Unparalleled Service Since 1971

Grating Pacific Offers Locally Manufactured Wire Mesh Products

With the 2017 acquisition of the operating assets of Flynn & Enslow, Inc., Grating Pacific is now proud to offer locally manufactured woven wire mesh products available for immediate shipment.

- / Large inventory of common woven and welded wire mesh patterns
- / Custom woven patterns
- / Available in steel, aluminum, stainless steel, or specialty alloys
- / Same day shipment of all stock items
- / Complete fabrication and finishing services available for all products

SPOTLIGHT



APPLICATIONS

- / Handrail Infill Panels
- / Security Fencing
- / Aggregate Screens
- / Trellises
- / Filter Screens
- / Hook Screens
- / Architectural Mesh
- / Hardware Cloth
- / Round Screens



WIRE MESH PRODUCTS



PLAIN CRIMP

- » Steel, Aluminum, Stainless, Brass, Copper
- » Alternating Pattern
- » Equal Size Warp & Fill Wires



INTER CRIMP

- » Steel, Aluminum, Stainless, Brass, Copper
- » Distinct Woven Profile
- » Screens and Architectural Applications



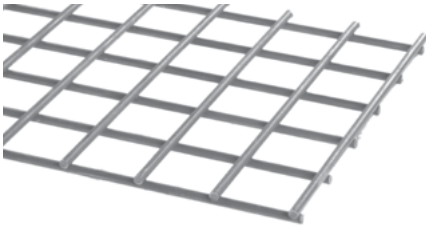
LOCK CRIMP

- » Steel, Aluminum, Stainless, Brass, Copper
- » Straight Warp Wires
- » Bold Visual Appearance



FLAT TOP

- » Steel, Aluminum, Stainless, Brass, Copper
- » Crimping Offset to One Side
- » Smooth Top Surface



WELDED

- » Carbon or Stainless Steel
- » Square or Rectangular Mesh
- » Handrail In-Fill Panels



HARDWARE

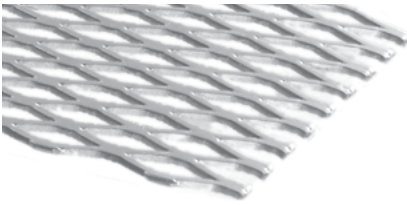
- » Galvanized or PVC Coated
- » Various roll sizes
- » Industrial, Agricultural, and Construction Applications

ARCHITECTURAL WEAVES



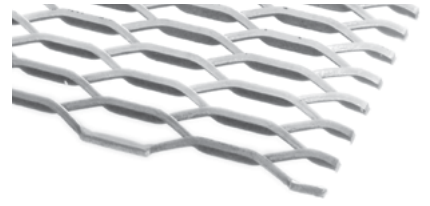
SPECIALTY WOVEN PATTERNS

- » Steel, Aluminum, Stainless, Copper, Brass, Bronze
- » Standard & Flat Wire
- » Creative Designs



EXPANDED METAL

- » Raised or Flattened
- » Steel, Aluminum, Stainless
- » Decorative Mesh



EXPANDED METAL GRATING

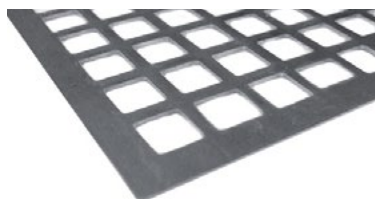
- » Walkway & Platform Gratings
- » Steel, Aluminum
- » Security Fencing

PERFORATED METALS



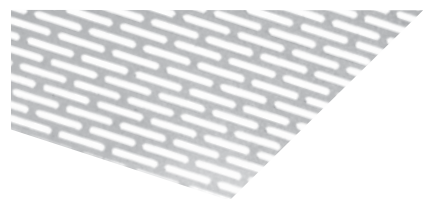
ROUND HOLE

- » Staggered or In-line Patterns
- » Steel, Aluminum, Stainless
- » Stock Sheets or Fully Fabricated



SQUARE HOLE

- » Staggered or In-line Patterns
- » Steel, Aluminum, Stainless
- » Custom Spacings Available



ORNAMENTAL

- » Oblong, Hex & Decorative Perforations
- » Steel, Aluminum, Stainless
- » Architectural Grade Screens

BAR GRATINGS



STANDARD BAR GRATING

- » Welded, Riveted & Pressure Locked
- » Carbon & Stainless Steels
- » Conforms to ANSI/NAAMM531
- » Plain or Serrated Surfaces
- » Stair Treads Available



HEAVY DUTY GRATING

- » Vehicular & H-20 Loads
- » Forklift Loads
- » Highway Drain Grates
- » Trench & Catch Basin Covers
- » Plain or Serrated Surfaces



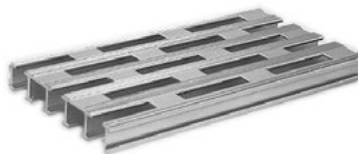
CLOSE MESH GRATING

- » Pressure Locked Construction
- » Steel, Aluminum, Stainless
- » Conforms to ADA Requirements
- » Designed for High Traffic Areas



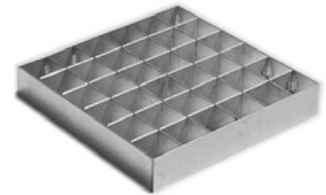
ALUMINUM BAR GRATING

- » Swaged, Pressure Locked & Riveted
- » Rectangular Bar or I-Bar
- » Flush Top Cross Bars Available
- » Close Mesh Gratings
- » Serrated Surface Available



ALUMINUM PLANK GRATING

- » Solid or Punched Surface
- » 3", 6", 9" Widths Available
- » Rectangular, Square, Round Holes
- » Conforms to MIL-G-18015
- » Various Plank Depths
- » Interlocking Planks Available



INLINE ALUMINUM ARCHITECTURAL GRILLS

- » Decorative Screens
- » Security Grilles
- » Equipment Enclosures
- » Numerous Patterns & Spacings
- » Architectural Finishes Available

SAFETY GRATINGS



GRIP STRUT® SAFETY GRATING

- » Serrated Diamond Matrix
- » Slip Resistant Surface
- » Steel, Aluminum, Stainless
- » Standard or Heavy Duty
- » Stair Treads



PERF-O GRIP® SAFETY GRATING

- » Punched Round Hole Pattern
- » Slip Resistant Surface
- » Steel, Aluminum, Stainless
- » Walkway Channels
- » Stair Treads



TRACTION TREAD™ GRATINGS & SHEET

- » Perforated Dimple Pattern
- » Formed Channels or Flat Sheets
- » HRPO, Galvanized Aluminum
- » Slip Resistant Surface
- » Drain Holes Available



GRATE-LOCK™ INTERLOCKING GRATING

- » Male-Female Interlocks
- » Traction Grip or Plain Surface
- » 6", 9", 12" Widths Available
- » 1-1/2", 2-1/2" & 4" Depths
- » Stair Treads



LADDER RUNGS

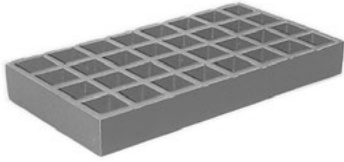
- » Grip Strut® Rungs
- » Traction Tread™ Rungs
- » Steel, Aluminum, Stainless
- » Slip Resistant
- » Various Widths Available



WALKWAY CHANNELS

- » Grip Strut® & Perf-O Grip® Surfaces Available
- » Integral Toeboards Comply with OSHA
- » Standard & Heavy Duty Products
- » Excellent Conveyor Walkway
- » Walkways to 36" Wide

FIBERGLASS GRATINGS



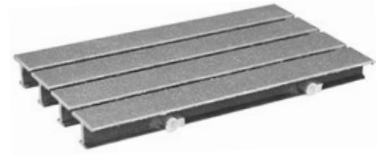
FIBERGRATE™ MOLDED FIBERGLASS GRATINGS

- » Various Resins Available
- » Slip Resistant Concave or Grit Surface
- » Maximum Corrosion Resistance
- » Solid Cover Available
- » USDA Approved Gratings



PULTRUDED FIBERGLASS GRATING

- » Maximum Load Carrying Ability
- » Various Resins Available
- » Numerous Bearing Bar Sizes
- » Slip Resistant Surface
- » Fire Retardant
- » Custom Colors Available



AQUA GRATE POOL & DECK GRATING

- » Comfortable for Bare Feet
- » Heel-proof Spacing
- » 1" and 1-1/2" Depths
- » Slip Resistant Surface

ACO TRENCH DRAIN SYSTEMS



PRECAST POLYMER CONCRETE SYSTEMS

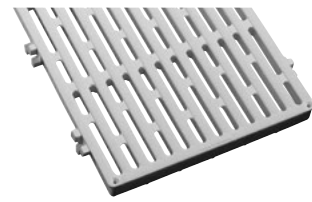
- » Sloping Modular Channels
- » Modular Catch Basins
- » Integral Locking Devices



PRECAST FIBERGLASS TRENCH SYSTEMS

- » Sloping Fiberglass Channels
- » Corrosion Resistant Resins
- » Wide Interior Widths

THRUFLOW DOCK GRATING



THRUFLOW DOCK GRATING

- » 12" Wide Interlocking Sections
- » 3'-0, 4'-0, and 5'-0 lengths
- » Light Gray and Maple Colors

ALGRIP



ALGRIP® FLOOR PLATE

- » Slip Resistant Surface
- » Custom Fabricated or Stock Sheets

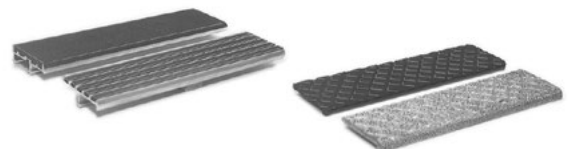
EMBED FRAMES



CUSTOM FRAMES & EMBED ANGLES

- » Fabricated to Order
- » Steel, Aluminum, Stainless
- » Fiberglass

STAIR NOSINGS



EXTRUDED ALUMINUM STAIR NOSINGS

- » Extruded Aluminum Base
- » Ribbed or Solid Abrasive Fill
- » Special Colors Available

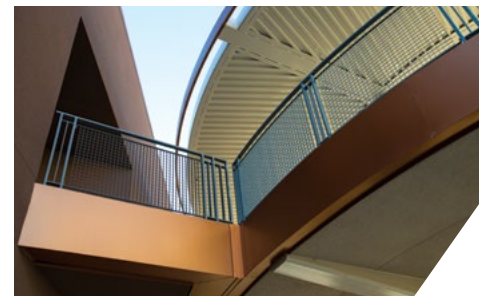
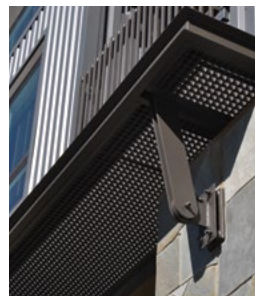
CAST STAIR NOSINGS

- » Cast Iron, Aluminum, Bronze
- » Cross Hatched Surfaces
- » All Items in Stock

ARCHITECTURAL GRATINGS

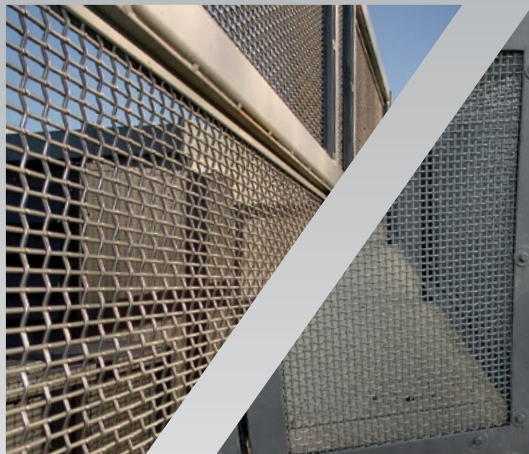
CODA ARCHITECTURAL PRODUCTS

- » Fence Panels
- » Handrail Infill
- » Louver Panels
- » Overhead Trellis
- » Green Screens



For a FREE complete product catalog call (800) 321-4314

Grating Pacific is proud to offer:



PROVIDING UNSURPASSED QUALITY THROUGH:

Superior Products / Design Consultation & Fabrication Services / Unparalleled Service
Same Day Shipment for All Stock Items



ARIZONA - Phoenix, AZ 1-888-936-9201

SOUTHERN CALIFORNIA - Los Alamitos, CA 1-800-321-4314

NORTHERN CALIFORNIA - Tracy, CA 1-800-491-7999

OREGON - Woodburn, OR 1-800-942-4041

WASHINGTON - Kent, WA 1-800-243-3939

www.gratingpacific.com